



**STEEL KING®**

BUILT TO DELIVER

# Steel Safety Products

Guard Rail & Accessories

**BUILT FOR  
SAFETY**

Designed for Versatility



# Steel King protective guard rail...

***Built better to protect better***

Industrial lift truck accidents are a common and costly occurrence.

OSHA estimates that there are 680,400 accidents each year involving powered industrial trucks. Approximately 90,000 workers suffer some type of injuries in these accidents, resulting in lost work time, workers' compensation claims, and productivity losses – not to mention the damage inflicted upon equipment and facilities. About 100 people lose their lives each year in these accidents<sup>1</sup>.

Steel King's protective products provide a cost effective barrier against the effects of such accidents.

1. Source: Powered industrial truck accidents report through OSHA's "First report of serious accidents" 1985-1990



**Steel King** is committed to making workplaces safer. Our current products set the industry standard, as we develop new products and technologies that steadily move the standards of facility safety forward. We pledge to continue this important innovative spirit with a determination as solid as steel.

#### **Reduce the costs and risks of:**

- Worker compensation claims
- Inventory losses
- Equipment damage
- Building damage
- Lost production time

#### **Protect valuable and fragile equipment:**

- Worker areas
- Aisleways
- Mezzanines
- In-plant offices
- Building walls
- Rack aisle ends
- Conveyors
- Inventory areas
- Pedestrian aisles
- Loading docks
- Electrical panels
- HVAC equipment
- Freezer / cooler panels
- Controls and computer consoles
- Many more...





# Steel Guard®



*A smart investment in plant safety*

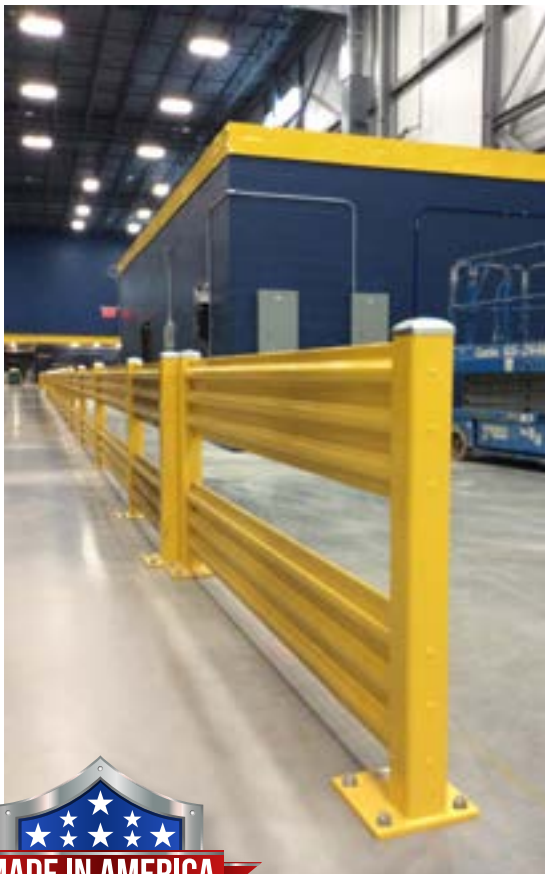
Protecting your people, product, and physical plant from collisions is one of the best investments you can make.

In 1986, we set out to design the toughest guard rail system in the industry. After more than 40,000 installations, **no other brand exceeds the rugged design of Steel Guard.**

***Now that's one tough rail!***



*Available through*  
**48 HOUR » QUICK SHIP**



# Armor Guard®

Armor Guard industrial safety railing is the perfect safety solution for separating your people areas – work stations and walkways – from light shop traffic.

Steel King's Armor Guard provides economical protection against accidents.

- Modular design makes expansion or relocation easy
- Universal posts feature connection holes on three sides allowing you to create barriers for your unique needs



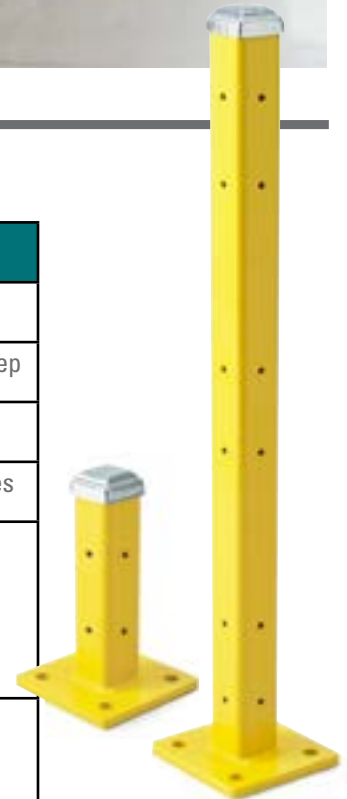
All hardware and post caps included.



Caps provided to cover unused holes.

4" square Steel Guard posts are available in 18" single-high or 42" double-high configurations.

	Steel Guard®	Armor Guard®
<b>Gauge</b>	11-gauge steel, 3 ribs	11-gauge steel, 2 ribs
<b>Dimensions</b>	14-1/2" high x 2-1/2" deep	9-3/4" high x 2-1/2" deep
<b>Posts</b>	4" square, 1/4" wall	3" square, 1/4" wall
<b>Connections</b>	3-bolt, pre-tapped holes	2-bolt, pre-tapped holes
<b>Post types available</b>	Standard center post Standard corner post Center post – end offset Center post – side offset Center post – standard offset	Universal post Corner offset Side offset
<b>Usage</b>	Protect product and plant from fork lift traffic and collisions	Protect pedestrians from equipment areas and traffic lanes
<b>Available Heights</b>	Single-high, double-high	Single-high, triple-high
<b>Steel Protection</b>	Heavy duty	Medium duty

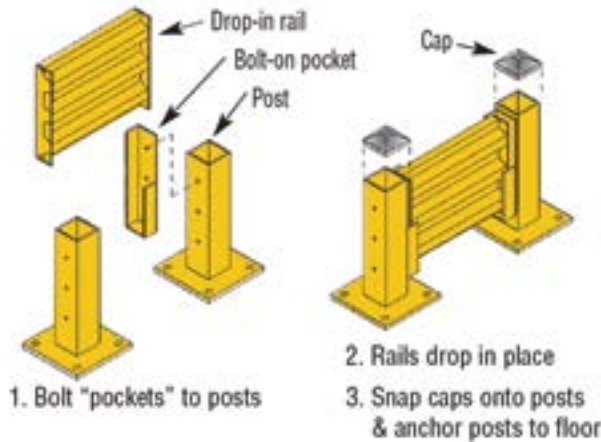


3" square Armor Guard posts are available in two heights – for single- or triple-rail configurations.

# Optional lift-out/drop-in rail system



An optional lift-out / drop-in rail system provides accessibility and protection. Available for both **Steel Guard** and **Armor Guard**.



*Lift-out guard rails provide protection for your equipment, while still affording easy access when needed.*

# How to design guard rail systems

1. **Choose height**
  - Single-high or double-high for Steel Guard
  - Single-high or triple-high for Armor Guard
2. **Choose post type**
3. **Choose rail lengths**

**Note:** Rails are measured from post-to-post, on center; actual rail component will be 4" shorter than the specified length on Steel Guard, and 3" for Armor Guard. Lift-out pockets increase center-to-center dimension by 1".
4. **Choose bolted or lift-out rail**
5. **Choose configuration**
  - Straight
  - Optional side-angled
  - Vertically-angled

## For Steel Guard® Systems

### Standard Center Post

Post tube drilled on two opposite sides, post welded in center of baseplate. Standard in-line guard rail post; can be used as an end or interior post.

### Standard Corner Post

Post tube drilled on two adjacent sides, post welded in center of baseplate. Used to make a 90-degree bend in a run of railing.

### Center Post – End Offset

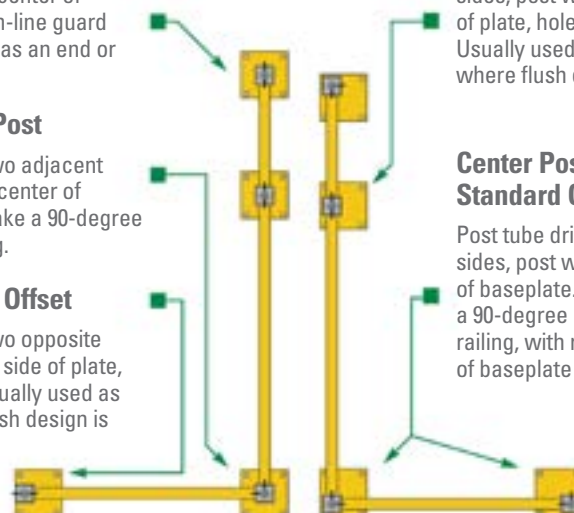
Post tube drilled on two opposite sides, post welded on side of plate, no change to hole. Usually used as an end post where flush design is desired.

### Center Post – Side Offset

Post tube drilled on two opposite sides, post welded on side of plate, hole shifted to side. Usually used as an in-line post where flush design is desired.

### Center Post – Standard Offset

Post tube drilled on two adjacent sides, post welded in corner of baseplate. Used to make a 90-degree bend in a run of railing, with rail flush to outside of baseplate or end-of-run flush.



*All posts shown are stock items.*



**Steel Guard Gate**

	<b>Steel Guard®</b>	<b>Armor Guard®</b>
<b>Material</b>	Corrugated 11-gauge steel, 3 ribs	Corrugated 11-gauge steel, 2 ribs
<b>Rail dimensions</b>	14-1/2" H x 2-1/2" D	9-3/4" H x 2-1/2" D
<b>Gate dimensions</b>	38-1/2" H x 43-3/4" W IN STOCK	38-1/2" H x 43-3/4" W IN STOCK

## Safety Gates

Steel King's self-closing safety gate adds versatility to the Steel Guard and Armor Guard railing systems.

Manufactured to the same standards as the Steel Guard and Armor Guard railing, the gates can be ordered as part of a new installation or retrofitted into an existing system.

Steel King's self-closing safety gates use heavy, 11-gauge corrugated steel rails and are designed to fit a 48" post-to-post center line within a protective railing system.

Gates bolt to the existing guard rail posts and are easily installed without cutting, welding or drilling.



**Armor Guard Gate**

The gate is shipped with the hinge assembly on one side of the gate. Changing the direction of the gate is as simple as removing a few bolts and turning the gate in the direction needed.

## Rub Rail

Steel King's rub rails are designed to protect vulnerable surfaces in narrow aisles and high traffic areas. They are often installed as protection for the end of rack aisles, in-plant offices, and exposed equipment.

Rails easily bolt on and can be installed at multiple levels for greater protection.



## Mega Guard®

Steel King's Mega Guard system is designed for quick and simple protection at ends of rack rows or adjacent to equipment. Tubes are angled to deflect impacts and maximize strength. Completely welded, one-piece design for quick assembly.

Baseplates are 10" x 10" steel plate, pre-punched for four 3/4" diameter anchor bolts. Tubes are 4" square x 1/4"-wall structural steel. All joints are fully welded. Horizontal tubes are welded "point-up" for better sanitation.



*Mega Guard's angled tubes are designed to deflect impact and maximize strength.*

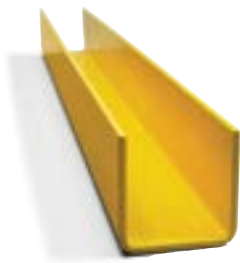
*Heavy-duty safety bollards are also available to guard fragile areas and corner locations throughout your manufacturing and industrial traffic areas.*

<b>Bollards</b>	<b>Mega Guards</b>	
24"	36"W x 10"H	48"W x 10"H
36"	36"W x 24"H	48"W x 24"H
42"	36"W x 36"H	48"W x 36"H

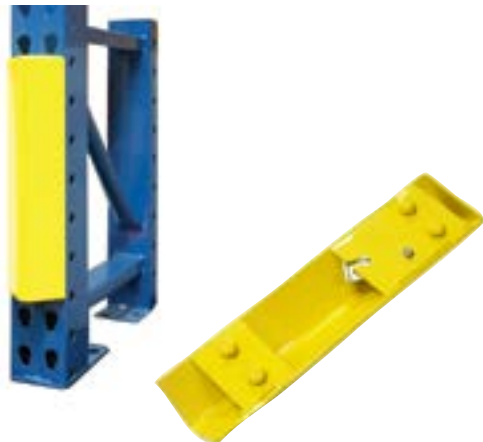


*Right-hand guard shown*

*The Column Core reinforcement is shown in yellow for added emphasis and detail. Actual item is welded into the rack column before painting.*



*Designed to protect both 3" and 4" wide columns/uprights, Steel King's Free-Standing Column Protectors come in three standard heights.*



## Guard Dawg®



Steel King's Guard Dawg system is an inexpensive low profile method to protect racks at intersections and along high traffic routes. Steel King's Guard Dawg can be ordered in any custom size needed.

- 5" x 3" x 3/8" angle
- 46" right or left guards in stock
- Double-ended guards available
- Protects 3" or 4" wide, 42" deep uprights with standard footplates
- Anchors and hardware included

## Column Core®

Forklift damage is the leading factor in about 90% of rack failures. Column Core strengthens SK2000® rack uprights and is exclusively available as a component to Steel King's SK2000 tubular racks, the benchmark system in the rack market. Column Core's unique C-shaped column reinforcement improves on SK2000 rack that's already two-and-a-half times more impact-resistant than comparable open-back racks. With Column Core, your SK2000 rack is five times more impact resistant at the front corners and side – where the upright is most vulnerable.

- Retain full beam adjustability
- Reduce puncturing, buckling and torsional twisting
- Reinforce only as high as needed

## Free-Standing Column Protectors

Steel King's Free-Standing Column Protectors shield rack columns from collision damage by blocking and deflecting fork trucks at the point of impact.

- Easy after-market add-on
- Standard heights: 12", 18", 24"
- Highly visible, safety yellow
- Protects 3" or 4" wide columns with standard base plates
- Requires four 1/2" X 3-3/4" anchors

## Snap-Guard® Column Protectors

Steel King's Snap-Guard is an adjustable column protector for boltless rack that protects SK2000 upright rack column from forklift damage. Snap-Guard is constructed of structural angle and features an exclusive four-rivet connection that automatically locks into the upright column. Adjustable, removable and flexible, the Snap-Guard can be used to protect each storage level. A great after-market addition to any pallet rack installation, Snap-Guard is available immediately through Steel King's Quick Ship program.

- Easy after-market add-on
- Four-rivet snap-on connection
- Auto-engaging safety lock
- Adjustable in 2" increments
- Remove and adjust tool available

# Why Choose Steel King?

**Industry Leadership** – With our state-of-the-art facilities and active participation in the associations that develop the national specifications for quality and safety, we lead the way with our uncompromising dedication to engineering and manufacturing excellence.

**Expertise and Versatility** – Our in-house engineering and drafting staff has decades of experience designing thousands of storage systems, which means we can custom engineer a solution for any storage challenge and ensure efficient space utilization.

**Quality and Safety** – Steel King is committed to providing customers with the highest quality and safest products possible. Our structural engineers design our products to strictly conform to industry design codes, and our rack system capacity charts are RMI-certified to ensure product and worker safety. Steel King facilities and processes are tested and fabricator licenses are approved for the City of Los Angeles and the City of Phoenix.

**Durability** – Made with the highest quality materials available, Steel King products are built to last. We design them to better resist the daily rigors of your environment, which means they last longer, require less maintenance and provide greater safety.

**Single Source Responsibility** – Our wide breadth of product offerings allows us single-source responsibility that ensures both cost and quality control.

**Welder Certification** – Our welders are trained and qualified to American Welding Society (AWS) D1.1 and D1.3 standards. We also have an in-house Certified Welding Inspector (CWI).

**We are a “one-stop shop” for all your storage needs.**



**STEEL KING®**

BUILT TO DELIVER

2700 Chamber Street, Stevens Point, WI 54481 | 715-341-3120 | 800-826-0203 | [www.steelking.com](http://www.steelking.com)



**Steel King has been delivering customized storage solutions since 1970,**

designing and manufacturing pallet racking systems and related material handling products that improve operational efficiency in manufacturing, warehousing and distribution facilities.

When it comes to offering the highest quality, safest and most diverse product offerings,

**Steel King is built to deliver.**

## PLANT LOCATIONS

2700 Chamber Street, Stevens Point, WI 54481

325 East Beckert Road, New London, WI 54961

30 Industrial Boulevard SE, Rome, GA 30161